

INSTALLATION GUIDE

Factbird® Energy Monitoring - Siemens Transformer Energy Monitoring

Hardware Setup



① Factbird® DUO



② Energy meter (Siemens model 7KT1672 or 7KT1673)



③ MCB Miniature Circuit Breaker



④ Signal cable x1 Wire-ends and an M8 connector



⑤ Power supply unit



⑥ Current transformer (Siemens 7KT1202 or similar)

Components not provided by Factbird. Please prepare if needed.

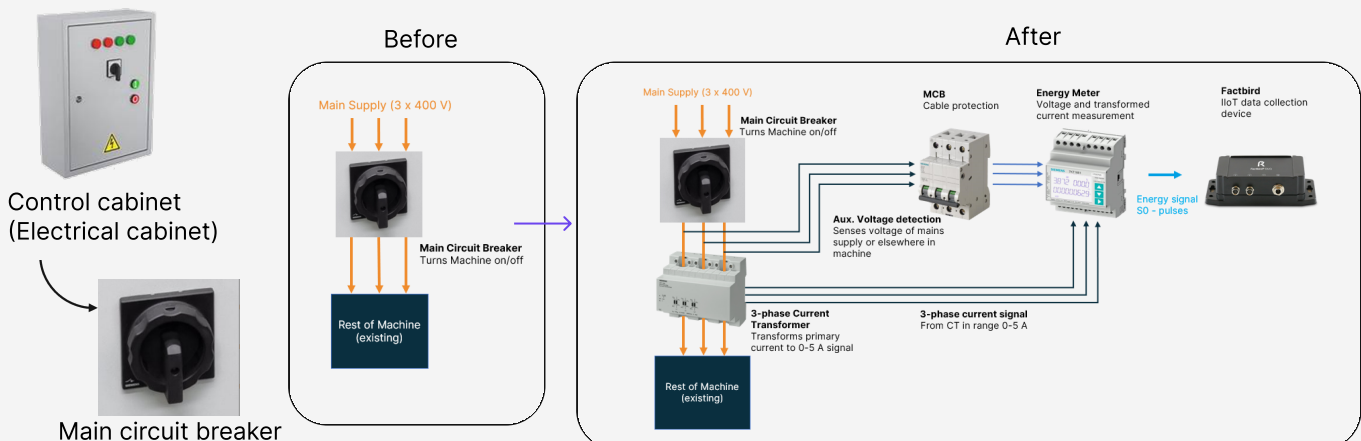
- DIN rails, DIN terminal blocks, cable marking labels, cable lugs, various cables/wires to connect the components

Safety information

The installation of energy meter requires qualified personnel. Follow the safety and warning notes in the energy meter's documentation.

Installation overview

- Install the MCB, energy meter and current transformer in the control cabinet.
- Without changing the existing main supply to machines, measure the current via current transformers and voltage via separate wires, which connects to energy meter. The energy meter is connected to Factbird device which sends the energy data directly to the cloud.



INSTALLATION GUIDE

Factbird® Energy Monitoring - Siemens Transformer Energy Monitoring

Hardware Setup

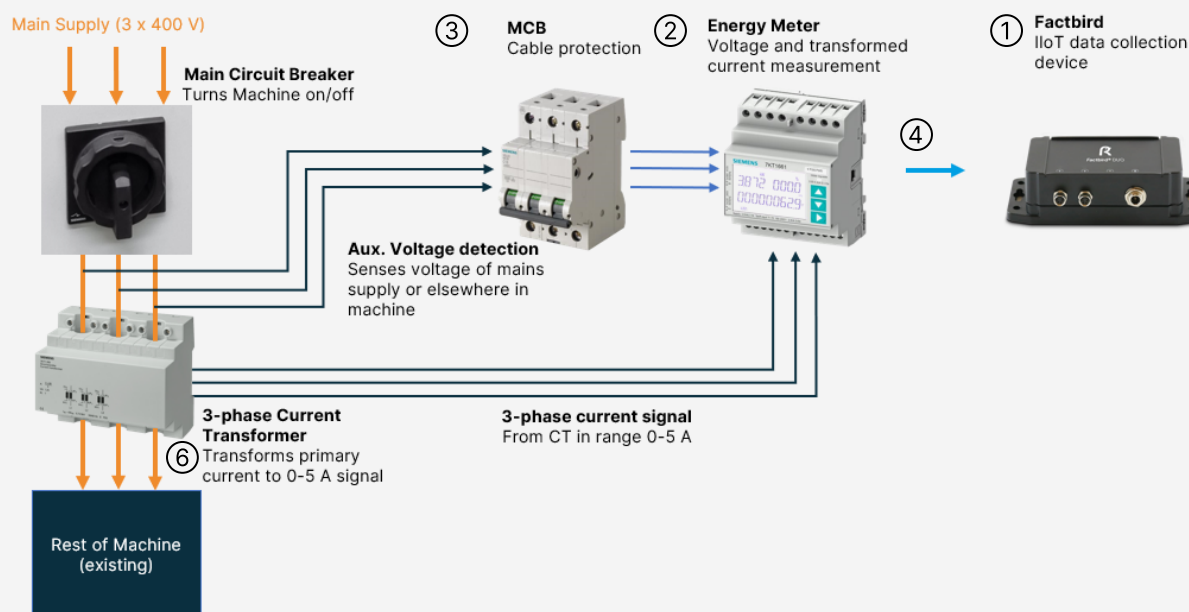
1

Connecting MCB, current transformer and energy meter

1. Mount ③ MCB, ② energy meter and ⑥ current transformer in a suitable location within the control cabinet.
2. Route phase wires through ⑥ the current transformer.
3. Route wires from each phase to ③ the MCB, specifically for voltage measurements.
4. Connect wires from ③ the MCB to ② the energy meter.
5. Connect wires from ⑥ the current transformer to ② the energy meter.

Connecting the energy meter to the Factbird device

5. Connect the open ends of ④ the wires to the energy meter's screw terminals, with the brown wire to 01+ output and the black wire to 01- output. Connect the M8 connector to ① the Factbird® devices.
6. Connect ⑤ power supply unit to ① the Factbird® devices and plug into power.



Please refer to the installation guide of Siemens devices for connection details, e.g. circuit diagram and tightening torque.

INSTALLATION GUIDE

Factbird® Energy Monitoring - Siemens Transformer Energy Monitoring

Hardware Setup

2

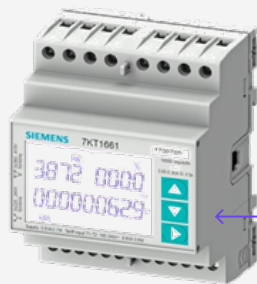
Configuring energy meter

On the energy meter, use the up and down arrow keys to navigate the menu, and use the right arrow to select a setting or confirm a value. Enter the setup menu by pressing and holding the up and down arrow keys simultaneously for 5 seconds.

For setting up model 7KT1672 or 7KT1673:

1. Select "SET".
2. Select "P01" (GENERAL).
3. Select "P01. 01" (CT primary).
4. Adjust to match the primary side of the CT (if the CT is "100A" choose 100A and confirm).
5. Press down to "P01. 02" (CT secondary) and select.
6. Adjust to match the secondary side of the CT (if the CT is "5A" choose 5A and confirm).
7. Press down to "P01. 05" (WIRING CONFIGURATION) and select.
8. Set to "L1-L2-L3-N" if N-wire is connected to the energy meter else choose "L1-L2-L3" and confirm.
9. Press up + down to move one step up in the menu.
10. Press down to "P11" (ENERGY PULSES) and select.
11. Select "P11.1" (PUL 1).
12. Select "P11.1 01" (SOURCE MEASURE).
13. Set to "Wh+" and confirm.
14. Select "P11.1 02" (COUNT UNIT).
15. Set to "100/K" and confirm.
16. Press twice on up + down to move two steps up in the menu.
17. Press down to "P14" (OUTPUTS) and select.
18. Select "P14.1" (OUT 1).
19. Select "P14.1 01" (OUTPUT FUNCTION).
20. Set to "PUL" and confirm.

The energy meter will return to the main screen after some time (alternatively, press and hold the up and down arrow keys simultaneously for 2 seconds).



Arrow keys to configure

INSTALLATION GUIDE

Factbird® Energy Monitoring - Siemens Transformer Energy Monitoring

Software setup

3

1. You'll receive a welcome email from Factbird.
2. Open the email and create your password according to the instruction in the email.
3. Log into the Factbird application and view your production data at: cloud.factbird.com



For more details, see the guide at factbird.com/resources/getting-started



How to make a short cut

For smartphone and tablet user, set Factbird icon on your home screen for quicker access.



1. Log in to cloud.factbird.com, tap the *Share* icon in the menu bar at the bottom.
2. Tap *Add to Home Screen* in the menu, and tap *Add* again.



1. Log in to cloud.factbird.com, tap the *three vertical dots* in the upper right corner.
2. Tap *Add to Home Screen* in the menu, and tap *Add* again.

